



Quality Education in the Best Learning Atmosphere

# LAKELAND CHRISTIAN SCHOOLS AERR 2023-2024

(780) 639 2077

[lca@hlvc.org](mailto:lca@hlvc.org)

[lakelandchristianacademy.com](http://lakelandchristianacademy.com)

 Lakeland Christian Academy

**Accountability Statement**

The Annual Education Results Report for Lakeland Christian School Society for the 2023/2024 was prepared under the direction of the Board of directors in accordance with the responsibilities under the Private Schools Regulation and the Education Grants Regulation. The Board is committed to using the results in this report, to the best of its abilities, to improve outcomes for students and to ensure that all students in the school authority can acquire the knowledge, skills and attitudes they need to be successful and contributing members of society.

This Annual Education Results Report for 2023/2024 was approved by the Board on Nov 29, 2024.

\_\_\_\_\_  
Board Chair

\_\_\_\_\_  
Date

**Student Growth and Success**

The educational philosophy of Lakeland Christian Schools depends upon the Bible to provide the viewpoint for interpreting any subject or any school activity. The mandate for Christian education comes from God’s command that children are to be taught to love God and give Him pre-eminence in their lives, and that parents are responsible for the total education of their children (Deuteronomy 6). The teacher represents the parents during the school day but does not relieve parents of their educational responsibilities to their children.

Student success requires age appropriate development in several areas including knowledge, skills, godly character, healthy relationships, emotional resilience, and social responsibility. Achievement is influenced by many factors and does not always result in measurable outcomes. Local assurance of student growth and success is achieved by reporting those items that are measurable and communicating the programs and supports that are reasonably expected to achieve growth in domains that are less conducive to quantitative measure

**About Us**

Lakeland Christian School Society is guided by its mission, vision and statement of faith and everything we do is through the lens of achieving excellence that reflect these statements. Our program emphasizes discipline, individual responsibility, parental involvement, and Biblical truth.

We maintain an ongoing process of continuous improvement which ensures our curriculum continues to meet the Department of Alberta Education requirements and outcomes for each course. Parents and other volunteers from the community enhance our students’ learning experience as they share their experience in the school.

Our student body consist of a variety of cultures. The vast majority of our students in Peace Christian Academy come from a Mennonite background, many with English being their second language. Lakeland Christian Academy’s student body is one third First Nations and Metis. The other two thirds are a mixture of students from Filipino, Mexican, Japanese and Caucasian backgrounds. As we acknowledge that we are all created in God’s image, an atmosphere of respect for our differences is created.

## Shared Responsibility

The education of young people is a responsibility shared by many stakeholders. The primary responsibility and authority for children's education resides with parents. Lakeland Christian School Society partners with parents within the formal school setting.

Lakeland Christian School Society is committed to communicating clearly with parents who hold primary responsibility for the education of their children, with students who are the direct beneficiaries of educational services, with the community who will benefit from graduates who are respectful, reliable and responsibly engaged citizens, and with government who has a fiduciary responsibility to ensure that quality education is accessible to Albertan students.

Teachers and board members receive all the Assurance Measure Report data and their input and recommendations related to the results are used to inform the AERR and Education Plan. Parents have access to current AERR and Education Plan on the school's public website.

## Student Success

Alberta Education requires that we report on PAT and DIPLOMA exam results for all of our students including self-identified FNMI students. They also require that we report on High School Completion Rates. Data values are suppressed by Alberta Education when a cohort has 6 or fewer students. LCSS has no publicly available PAT and DIPLOMA results, nor do we have publicly available results for high school completion as we have fewer than 6 students in each cohort. Lakeland Christian School Society supports all learners with quality education and works with students and parents to support student learning.

## Citizenship

Performance Measure	Lakeland Christian School Society Results			Provincial Results			Evaluation		
	Current Result	Prev Year Result	Prev 3 Year Average	Current Result	Prev Year Result	Prev 3 Year Average	Achievement	Improvement	Overall
Percentage of teachers, parents and students who are satisfied that students model the characteristics of active citizenship.	77.3	81.9	86.7	79.4	80.3	80.9	Intermediate	Declined	Issue

### Comment on Results and Strategies

- The mission, values, and statement of faith of the LCSS are foundational to developing the characteristics of active citizenship. Beliefs lead to values and values guide our actions.
- A central focus of our program is excellence in character, moral, and ethical development. We believe that students must be prepared to influence positive change in their world.
- The biblical values that are an integral part of everything we do, equip students to be successful and ethical citizens.
- A strong work ethic, care for the less fortunate, and respect for all, is the cornerstone of an educated person. The tone and culture of our school is positive and supportive due to the infusion of biblical values into all areas of our curriculum, programs, and extracurricular activities.
- Last year the student body tripled in size and the majority of our staff were new. This resulted in the decline of our overall percentages for Lakeland Christian School Society versus the results over the last three years. As we continue to teach and model active citizenship to our students, we believe we will see an increase in these results to match or better our previous averages.

## Student Learning Engagement

Performance Measure	Lakeland Christian School Society Results			Provincial Results			Evaluation		
	Current Result	Prev Year Result	Prev 3 Year Average	Current Result	Prev Year Result	Prev 3 Year Average	Achievement	Improvement	Overall
Percentage of teacher, parent and student agreement that students are engaged in their learning at school.	71.4	66.7	73.7	83.7	84.4	84.8	Intermediate	Improved	Acceptable

### Comment on Results and Strategies

- Student measure is quite low overall for student engagement. However, when the students were asked how they interpreted the survey question from Alberta Ed, they responded that they answered whether or not they “liked” the curriculum content often comparing it to their favourite subjects. When asked the question whether or not the instruction they receive is interesting and effective to help them learn the material presented, the students’ responses were extremely positive.
- One of the highlights and successes in our schools is Regional Student Convention. This is a yearly competition in which students can compete in over 140 different events in the categories of academics, athletics, music, oratory, art, and numerous aspects of service. All of our students find areas that interests them and they are incorporated in our daily studies. Students learn about dedication, patience, commitment and striving for excellence as they prepare and compete in these events. Our students ages 8-12 compete provincially against over 100 other students and students ages 13-18 compete interprovincially against students from British Columbia to Northern Ontario. We have always done very well at these competitions bringing home many 1<sup>st</sup>, 2<sup>nd</sup>, and 3<sup>rd</sup> place prizes. Lakeland Christian Academy has won best in platform and music events many times.
- Our students also have the opportunity to compete internationally. Over 20 nations are represented at these competitions with up to 2500 students in attendance. Our students have done well at these competitions and have placed in the top 6 many times.

## Literacy and Numeracy

Grade	Name of Assessment	Total Students Assessed	Total identified as being at risk on initial assessment	Total identified as being at risk on final assessment	Average number of months behind grade level at initial assessment	Average number of months gained at grade level by at risk students at time of final assessment
Literacy						
1	CC3	9				
	LeNS	9				
2	CC3	14				
	LeNS	14				
3	CC3	14	1	1	15	10
Numeracy						
1	Numeracy Screening Assessments	9				
2	Numeracy Screening Assessments	14				
3	Numeracy Screening Assessments	14	1	1	13	8

**Comment on Results and Strategies**

- Lakeland Christian School Society utilizes an individualized learning approach with a very low student/staff ratio.
- Our program is phonics based which reinforces literacy.
- Memorization of simple math facts is a fundamental skill that is emphasized for all of our students.
- Manipulative are extensively used, especially for at risk students
- EA one on one for at risk students working on phonics, fluency, and numeracy

**Education Quality**

Percentage of teachers, parents and students satisfied with the overall quality of basic education.

	Authority					Measure Evaluation			Province				
	2020	2021	2022	2023	2024	Achievement	Improvement	Overall	2020	2021	2022	2023	2024
	%	%	%	%	%				%	%	%	%	%
Overall	100.0	100.0	92.6	95.8	84.9	Intermediate	Declined	Issue	90.3	89.6	89.0	88.1	87.6
Parent	100.0	*	94.4	*	88.0	Very High	Maintained	Excellent	86.7	86.7	86.1	84.4	83.8
Student	100.0	100.0	90.7	95.8	81.8	Low	Declined	Issue	87.8	86.3	85.9	85.7	84.9
Teacher	*	*	*	*	*	*	*	*	96.4	95.7	95.0	94.4	93.9

**Comment on Results and Strategies**

- The staff at Lakeland Christian School Society care about the success of each student and therefore are very committed to them.
- We offer teachers and leaders various professional development opportunities throughout the school year.
- In order to maintain a professional culture of continuous improvement we give the staff numerous opportunities for collaboration, discussion, and planning to ensure all students are supported.
- Teachers and leaders use a range of data arising from their day to day practice to motivate and direct their continuous learning.
- We strive for continuous improvement by upgrading teaching aids and resource materials, as well as offering various professional development opportunities to staff during the school year.
- With the large increase in student body and staff, it has taken time for both new students, parents, and staff to familiarize themselves with the way we facilitate students learning. As they get comfortable with the changes and paradigm shift to individualized learning verses whole classroom teaching, the satisfaction of the overall quality of education will increase to our previous numbers.

**Professional Learning**

Measure
Support for teaching and leadership quality through professional learning, supervision, and evaluation processes.
Strategies
<ul style="list-style-type: none"> <li>• Professional development continues to focus on equipping teachers to support all of our students needs as well as accomplish the mission of our schools.</li> <li>• Staff will be attending two professional conferences and have access to ERLC and other material for subject specific learning.</li> <li>• The staff has numerous opportunities for collaborations, discussion, and planning to ensure that they are supported and have the necessary resources to be successful.</li> </ul>

## Welcoming, Caring, Respectful and Safe

The percentage of teachers, parents and students who agree that their learning environments are welcoming, caring, respectful and safe.

	Authority				Measure Evaluation			Province			
	2021	2022	2023	2024	Achievement	Improvement	Overall	2021	2022	2023	2024
	%	%	%	%				%	%	%	%
Overall	97.5	92.4	75.9	83.3	High	Maintained	Good	87.8	86.1	84.7	84.0
Parent	*	100.0	*	90.8	High	Maintained	Good	88.2	86.9	85.6	85.3
Student	97.5	84.8	75.9	75.7	Intermediate	Maintained	Acceptable	79.8	77.7	76.6	75.2
Teacher	*	*	*	*	*	*	*	95.3	93.6	92.0	91.6

### Comment on Results and Strategies

- We maintain a close community and high behavioral expectations based on the school's mission statement and core values
- We teach and maintain standards of behavior through modelling respect, kindness, and a genuine regard for each student and staff member.
- Total inclusion of special needs students in our program, tailoring expectations and required outcomes to their individual abilities help students feel accepted, respected, and safe.
- Daily devotions and weekly chapels focus on character and faith development.
- Health and life skills classes develop students' knowledge of healthy character and social functioning.

## Program Access

The percentage of teachers, parents and students who agree that students have access to the appropriate supports and services at school.

	Authority				Measure Evaluation			Province			
	2021	2022	2023	2024	Achievement	Improvement	Overall	2021	2022	2023	2024
	%	%	%	%				%	%	%	%
Overall	92.6	93.4	81.1	71.6	Intermediate	Declined	Issue	82.6	81.6	80.6	79.9
Parent	*	100.0	*	71.2	Intermediate	Declined	Issue	78.9	77.4	75.7	75.4
Student	92.6	86.9	81.1	72.0	Intermediate	Declined	Issue	80.2	80.1	79.9	78.7
Teacher	*	*	*	*	*	*	*	88.7	87.3	86.2	85.6

### Comment on Results and Strategies

- The growth that we experienced in our student body attests to the varied results in the overall percentages for Lakeland Christian School Society versus the previous average. As the students and parents are made aware of the supports that are available, this result will increase.
- Students and parents may not be aware of the resources available until they require support due to the nature of confidentiality. This can impact the survey measures.
- Effective communication about the supports that we have in place is vital.
- Continued training in various areas including mental health is a priority.

## Understanding and Respect for FNMI History

Measure
Students will learn about the history of First Nations, Inuit, and Metis within Canada and demonstrate respect for all people as they are created in the image of God.
<b>Strategies and Comments</b> <ul style="list-style-type: none"> <li>Lakeland Christian School Society has always promoted the study and appreciation of other cultures as we have always had a vast number of different cultures represented in our student body.</li> <li>Teachers highlight the various cultures as they are teaching Social Studies, Literature, Health and Life Skills, and Art. We encourage our students to share about their cultures during class time, celebrating their differences and similarities. This aligns with our belief that all people are created in the image of God and therefore have much to learn from each other. This is foundational to building a caring, responsible, and respectful community for all Canadians.</li> <li>Teachers also share the atrocities that have taken place in Canadian history during colonialization and the world wars with respect to different cultures and races.</li> </ul>

## Parental Involvement

Percentage of teachers and parents satisfied with parental involvement in decisions about their child's education.

	Authority					Measure Evaluation			Province				
	2020	2021	2022	2023	2024	Achievement	Improvement	Overall	2020	2021	2022	2023	2024
	%	%	%	%	%				%	%	%	%	%
Overall	100.0	n/a	100.0	n/a	95.7	Very High	Maintained	Excellent	81.8	79.5	78.8	79.1	79.5
Parent	100.0	*	100.0	*	95.7	Very High	Maintained	Excellent	73.9	72.2	72.3	72.5	74.4
Teacher	*	*	*	*	*	*	*	*	89.6	86.8	85.2	85.7	84.6

## Comment on Results and Strategies

- The schools in Lakeland Christian School Society is a choice for parents. We communicate our mission and vision clearly and our faith and core values are reflected in everything we do.
- We communicate on a daily basis with parents through means of student agendas, emails, and texting.
- We communicate with report cards and parent/teacher meetings.
- Many parents are very involved with supporting their child's learning through volunteering on a regular basis.
- As God has mandated that parents have the responsibility to train up their children, we work closely with parents to support students academically, emotionally, and spiritually.
- We involve parents to strategize to address behavioural issues focusing on character development.

## Whistleblower Protection

Lakeland Christian School Society's Whistleblower Policy is available to staff.

There were no PIDA (Public Interest Disclosure (Whistleblower Protection) Act) disclosures or investigations during the 2023/2024 school year.

## Summary of Financial Results

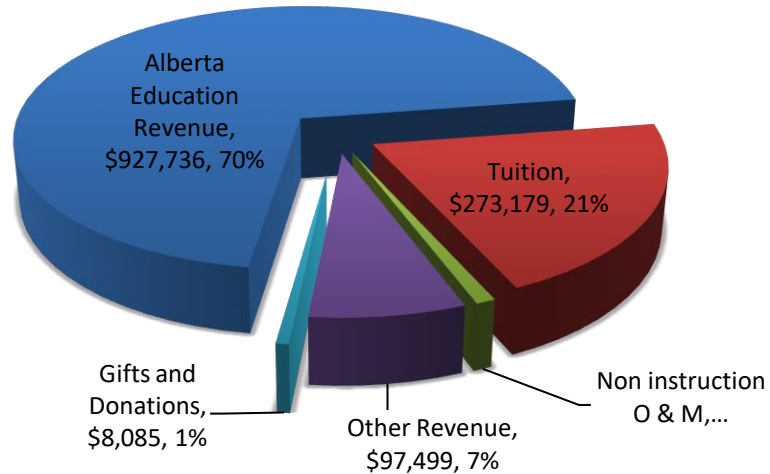
### Statement of Audited Revenues and Expenditures Year Ended Aug 31, 2024

For more information, contact the school. The AFS is available for school parents to view at the office upon request.

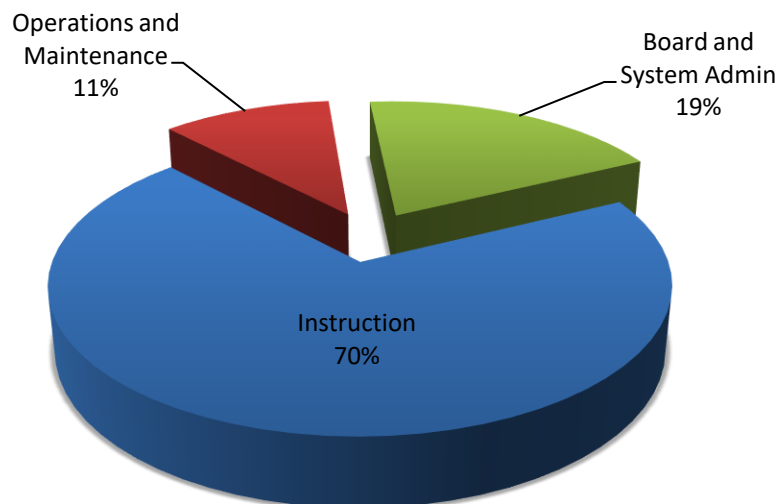
Audited Revenues	
Alberta Education Revenue	\$927,736
Tuition	\$273,179
Non-instruction O & M	\$12,312
Other Revenue	\$97,499
Gifts and Donations	\$8,085
<b>Total</b>	<b>\$1,318,811</b>

Audited Expenditures	
Instruction	\$823,870.00
Operations and Maintenance	\$125,920.00
Board and System Admin	\$225,678.00
<b>Totals</b>	<b>\$1,175,468.00</b>

### Audited Revenues



### Audited Expenditures





**Statement of Operations – Alberta Education Segment Disclosure for the Year Ended Aug 31, 2024**  
 For more information, contact the school. The AFS is available for school parents to view at the office upon request.

Audited Revenues	
Alberta Education Revenue	\$927,736
Audited Revenues	\$171,630
Alberta Education Revenue	\$43,601
Tuition	\$567,653
Non-instruction O & M	\$68,566
Other Revenue	\$19,972
Gifts and Donations	\$18,950
Total	\$890,372

